

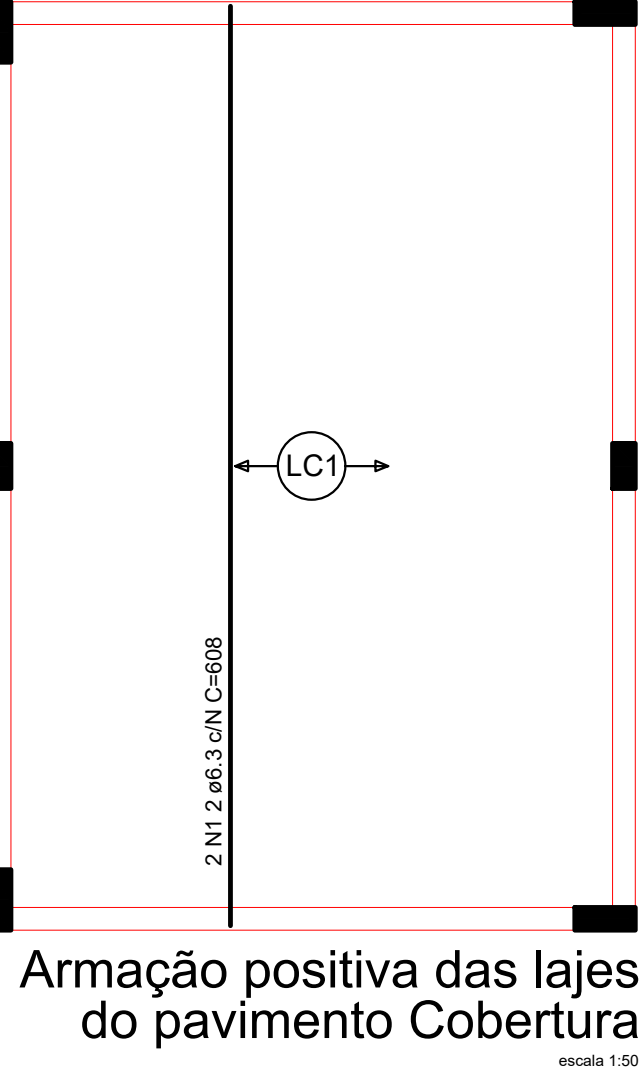
RELAÇÃO DO AÇO

ACO	N	DIAM (mm)	QUANT	C.UNIT (cm)	C.TOTAL (cm)
CA60	1	5.0	122	77	9394
CA50	2	8.0	2	438	876
CA60	3	8.0	2	472	944
CA50	4	8.0	2	624	1248
CA60	5	10.0	2	437	874
CA60	6	10.0	2	478	956
CA60	7	10.0	2	330	660
CA60	8	10.0	2	663	1326
CA60	9	10.0	1	349	698
CA60	10	10.0	2	625	1250
CA60	11	10.0	2	642	1284

RESUMO DO AÇO

ACO	DIAM (mm)	C.TOTAL (m)	PESO + 0% (kg)
CA60	5.0	122.7	80
CA50	8.0	170.4	26.3
PESO TOTAL (kg)			106.3

Volume de concreto (C-25) = 0.94 m³
Área de forma = 17.07 m²



RELAÇÃO DO AÇO

ACO	N	DIAM (mm)	QUANT	C.UNIT (cm)	C.TOTAL (cm)
CA50	1	6.3	2	608	1216

RESUMO DO AÇO

ACO	DIAM (mm)	C.TOTAL (m)	PESO + 0% (kg)
CA50	6.3	12.2	3

PESO TOTAL (kg) = 3

Volume de concreto (C-25) = 1.69 m³
Área de forma = 0.00 m²



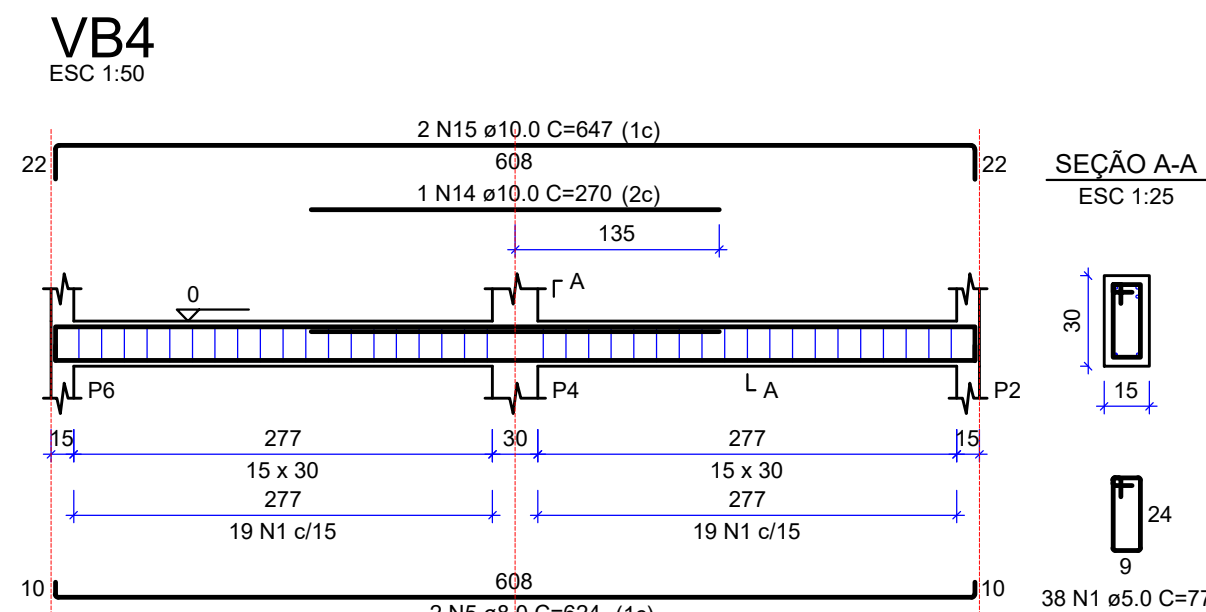
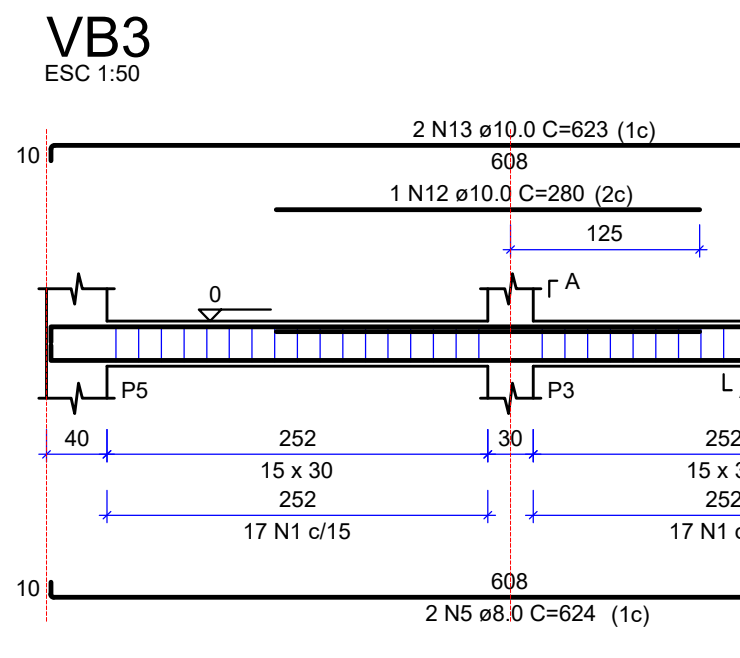
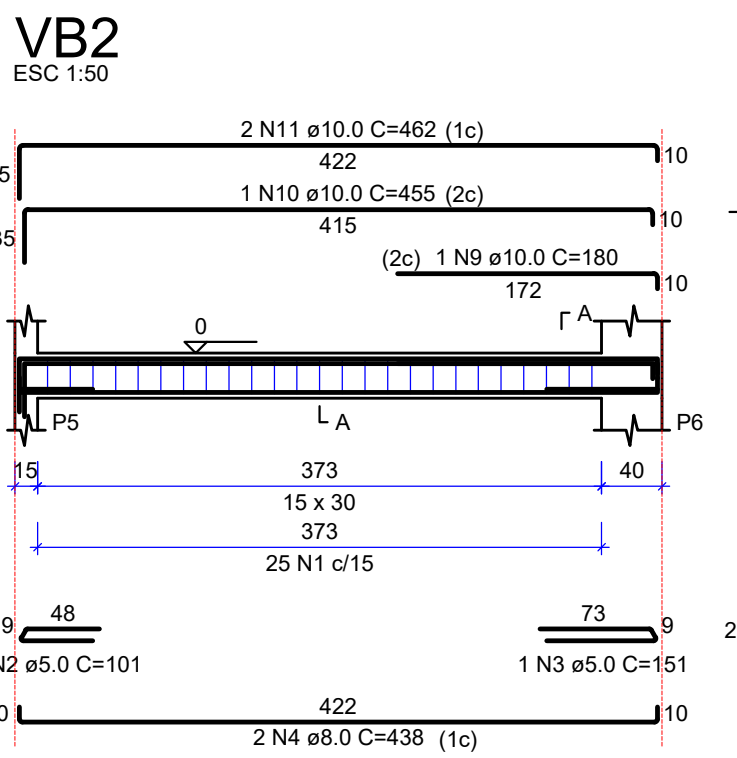
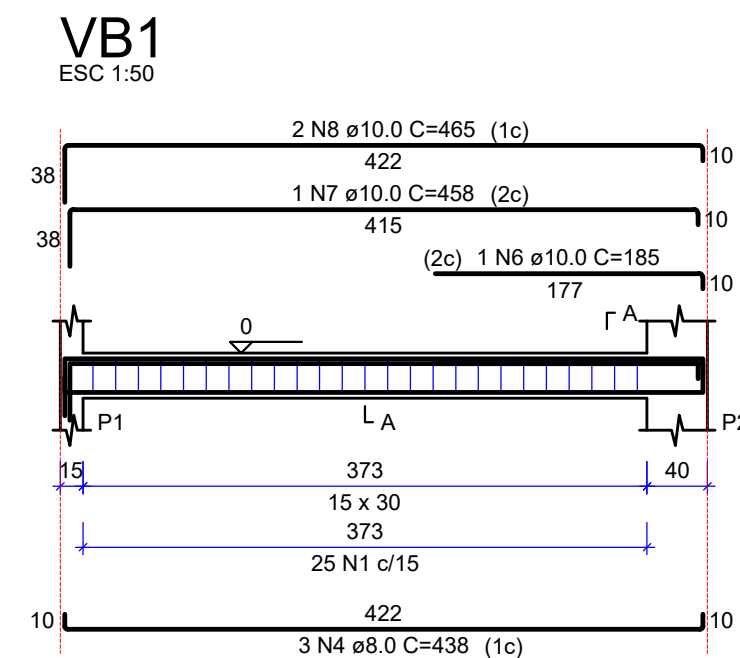
RELAÇÃO DO AÇO

ACO	N	DIAM (mm)	QUANT	C.UNIT (cm)	C.TOTAL (cm)
CA60	1	1R 12545	14	414	5796
CA50	2	8.0	14	428	5992

RESUMO DO AÇO

ACO	DIAM (mm)	C.TOTAL (m)	PESO + 0% (kg)
CA50	8.0	59.9	23.6
CA60	1R 12545	58	51.6
PESO TOTAL (kg)			75.2

Volume de concreto (C-25) = 0.00 m³
Área de forma = 0.00 m²



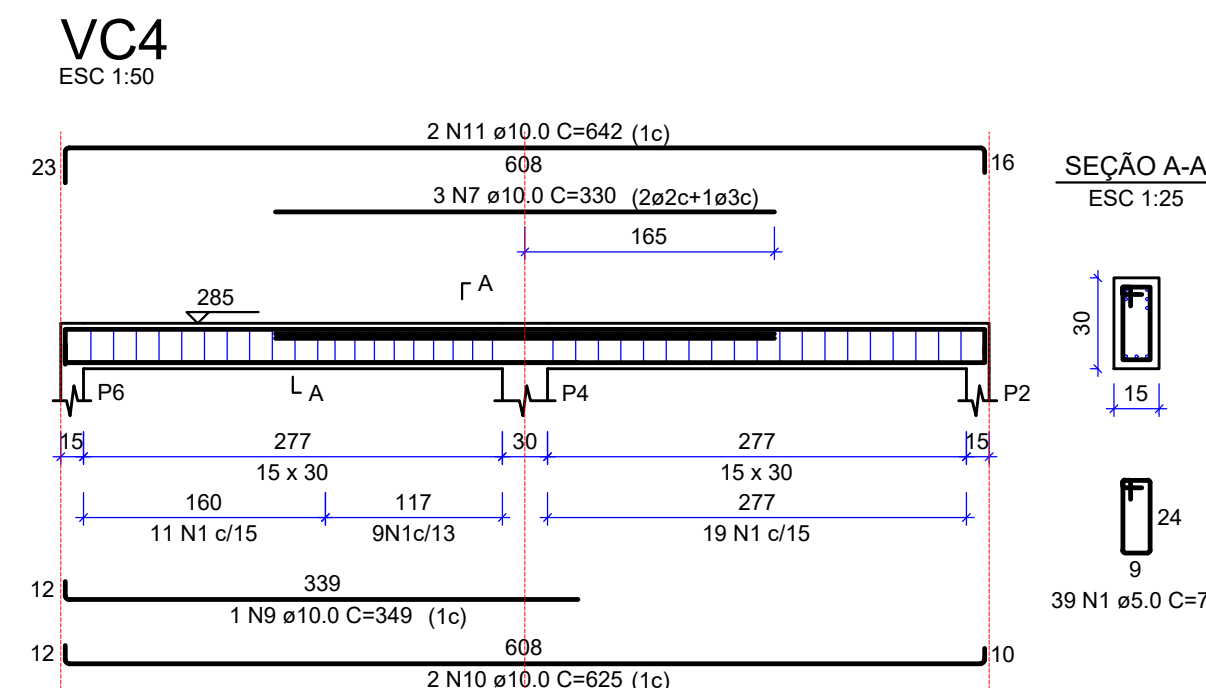
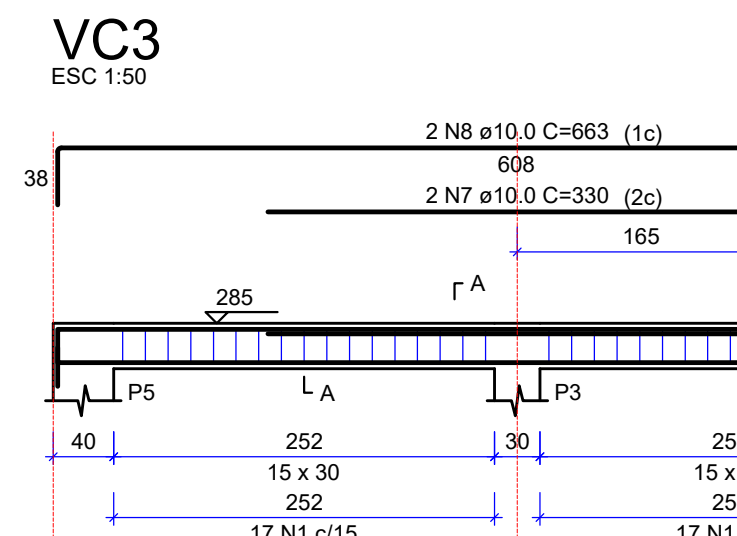
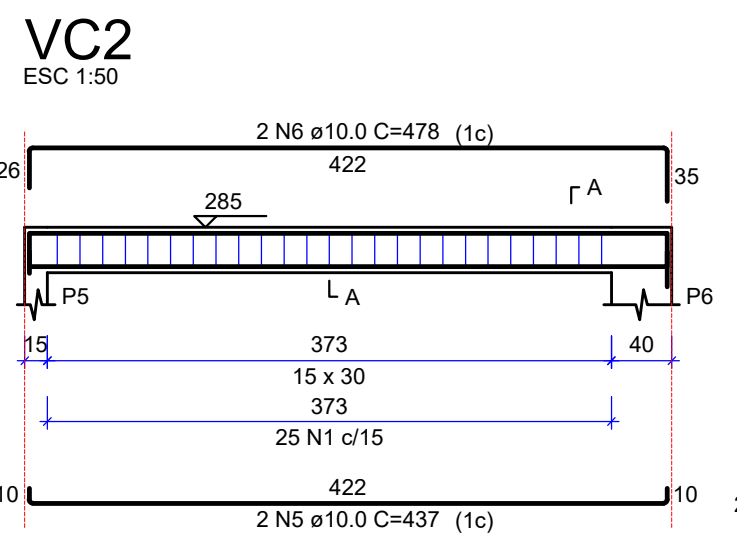
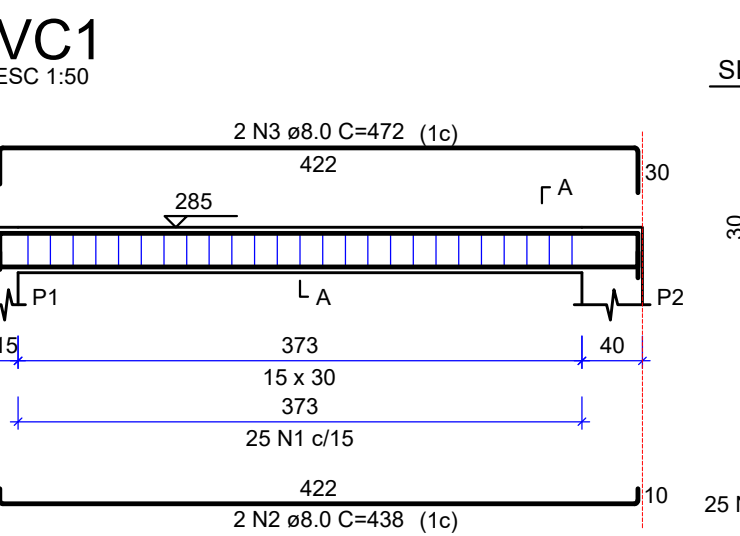
RELAÇÃO DO AÇO

ACO	N	DIAM (mm)	QUANT	C.UNIT (cm)	C.TOTAL (cm)
CA60	1	5.0	122	77	9394
CA50	2	8.0	1	101	101
CA50	3	5.0	1	151	151
CA50	4	8.0	5	438	2190
CA50	5	8.0	4	624	2496
CA50	6	10.0	1	185	185
CA50	7	10.0	1	458	458
CA50	8	10.0	2	465	930
CA50	9	10.0	1	180	180
CA50	10	10.0	1	455	455
CA50	11	10.0	2	462	924
CA50	12	10.0	1	280	280
CA50	13	10.0	2	623	1246
CA50	14	10.0	1	270	270
CA50	15	10.0	2	647	1294

RESUMO DO AÇO

ACO	DIAM (mm)	C.TOTAL (m)	PESO + 0% (kg)
CA50	8.0	45.9	18.5
CA60	10.0	62.2	38.4
CA50	5.0	96.5	14.9
PESO TOTAL (kg)			59.9

Volume de concreto (C-25) = 0.81 m³
Área de forma = 10.82 m²



RELAÇÃO DO AÇO

ACO	N	DIAM (mm)	QUANT	C.UNIT (cm)	C.TOTAL (cm)
CA60	1	5.0	123	77	9471
CA50	2	8.0	2	438	876
CA50	3	8.0	2	472	944
CA50	4	8.0	2	624	1248
CA50	5	10.0	2	437	874
CA50	6	10.0	2	478	956
CA50	7	10.0	2	330	660
CA50	8	10.0	2	663	1326
CA50	9	10.0	1	349	698
CA50	10	10.0	2	625	1250
CA50	11	10.0	2	642	1284

RESUMO DO AÇO

ACO	DIAM (mm)	C.TOTAL (m)	PESO + 0% (kg)
CA50	8.0	30.7	12.1
CA60	10.0	76.9	47.4
CA50	5.0	94.7	14.6
PESO TOTAL (kg)			59.5

Volume de concreto (C-25) = 0.81 m³
Área de forma = 10.46 m²